

Loading Report

E-mail: Customer_Service@winqc.cn

Web: www.winqc.cn

Container Loading Report

Summary Section



Service Number: WIN-QC 20221102

Product Name	Prime Cold Rolled Stainless Steel Coils
Item number	...
P/O number	--
Quantity	20coils
Client name	Foshan Huanyu New Material Co. LTD
Supplier name	Foshan Huanyu New Material Co. LTD
Inspection date	Nov 02, 2022
Arrival time	AM13:00
Departure time	PM16:20
Inspection location	Foshan
Inspector	Tony

Special Attention



Loading Report

E-mail: Customer_Service@winqc.cn

Web: www.winqc.cn

CARGO LOADING & SECURING OPERATION

1. Each coil strapped with metal belts in the wooden frame, the frame with 2 wooden bars under the coil and 3 wooden bars in the longitude with the nails for secured, were stacked in the warehouse. The coils were transferred into the containers by fork lift trucks.
2. As per Shipper's instruction, securing coils in container was as below (tick where applicable):
 - 2.1 (√) Two(2) coils in mild stored near front, other 6 coils were stored in mild of the container, the remain 1 Stainless Steel coils stored in the door side. Two(2) coils in mild stored near front, other 4 coils were stored in mild of the container, the remain 2 Stainless Steel coils stored in the door side.
 - 2.2 () Softwood battens were directly nailed onto the container floor in 2 lines along the longitudinal centre line.
 - 2.3 (√) The coils were laid on the wooden pallets, the one coil near the front was lashed with 2 set of wire rope tie-up and downs. The coils and the wooden pallets were tied together with the metal bands.
 - 2.4 (√) The steel coils and steel sheets were blocked by wedge woods at both sides in the container's floor by nails.
3. The steel coils were suitably placed onto the above purposely-constructed wooden base, chocked off with softwood frame work at both sides and both ends in order to arrest any longitudinal and sideward movement of the coils inside the container during the transit. We observed that sufficient space had been kept inside between the coils and the walls of the container.

4. INSPECTION RESULT:

Under our supervision, the above-mentioned coils were loaded into 2×20' container. We checked and examined the coils where visible and accessible with the results as follow:



Loading Report

E-mail: Customer_Service@winqc.cn

Web: www.winqc.cn

CONTAINER NO	STYLE NO.	Specifications (mm)	QUANTITIES (ROLL)	Net Weight(kgs)	Gross Weight(kgs)	CUSTOM SEALS NO.
CICU3111998	1	0.2*1000*C/white Nano	1	2586	2646	H202414 600197
	2	0.2*1000*C/white Nano	1	2610	2670	
	3	0.2*1000*C/white Nano	1	2626	2686	
	4	0.2*1000*C/white Nano	1	2600	2660	
	5	0.2*1000*C/white Nano	1	2728	2788	
	6	0.2*1000*C/white Nano	1	2484	2544	
	7	0.2*1000*C/white Nano	1	2672	2732	
	8	0.16*1200*C/white Nano	1	3092	3152	
	9	0.16*1200*C/white Nano	1	3016	3076	
	10	0.2*1200*C/white Nano	1	2516	2576	
TOTAL QUANTITY			10	26930	27530	
CONTAINER NO	STYLE NO.	Specifications (mm)	QUANTITIES (ROLL)	Net Weight(kgs)	Gross Weight(kgs)	CUSTOM SEALS NO.
CICU3112145	1	0.2*1000*C/white Nano	1	2558	2618	H202411 600198
	2	0.2*1000*C/white Nano	1	2988	3048	
	3	0.2*1000*C/white Nano	1	2644	2704	
	4	0.2*1000*C/white Nano	1	2882	2942	
	5	0.2*1000*C/white Nano	1	2332	2392	
	6	0.2*1000*C/white Nano	1	2264	2324	
	7	0.16*1200*C/white Nano	1	3090	3150	
	8	0.16*1200*C/white Nano	1	3040	3100	
	9	0.2*1200*C/white Nano	1	2570	2630	
	10	0.2*1200*C/white Nano	1	2706	2766	
TOTAL QUANTITY			10	27074	27674	

Product description

Loading Report

E-mail: Customer_Service@winqc.cn

Web: www.winqc.cn



Cargo storage in open yard waiting for loading



Cargo storage in open yard waiting for loading



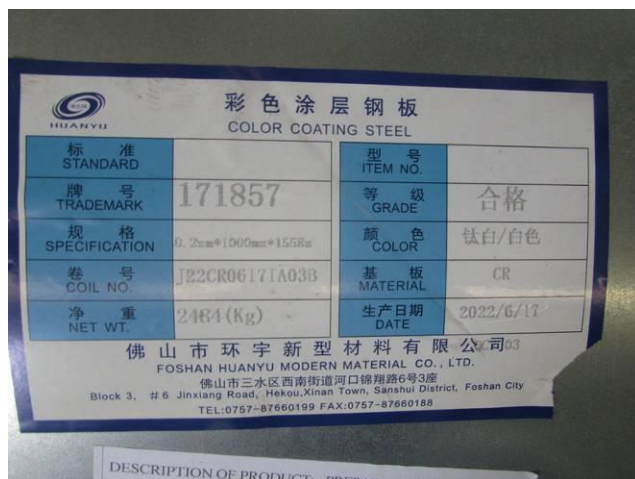
Cargo storage in open yard waiting for loading.



Cargo storage in open yard waiting for loading.



Cargo mark



Cargo mark

Loading Report

E-mail: Customer_Service@winqc.cn

Web: www.winqc.cn



Cargo mark



Cargo mark



Cargo mark



Cargo mark



Cargo mark

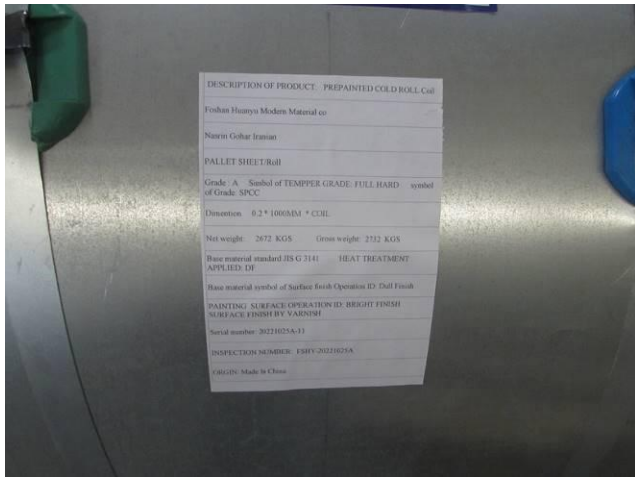


Cargo mark

Loading Report

E-mail: Customer_Service@winqc.cn

Web: www.winqc.cn



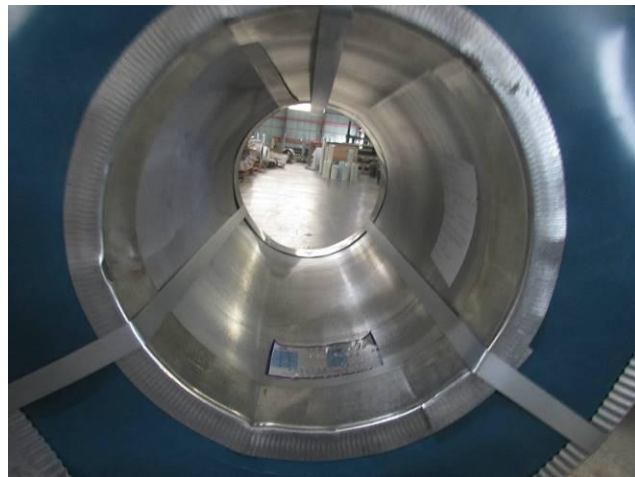
Cargo mark



Product view



Product view



Product view



Product view



Wooden support

Loading Report

E-mail: Customer_Service@winqc.cn

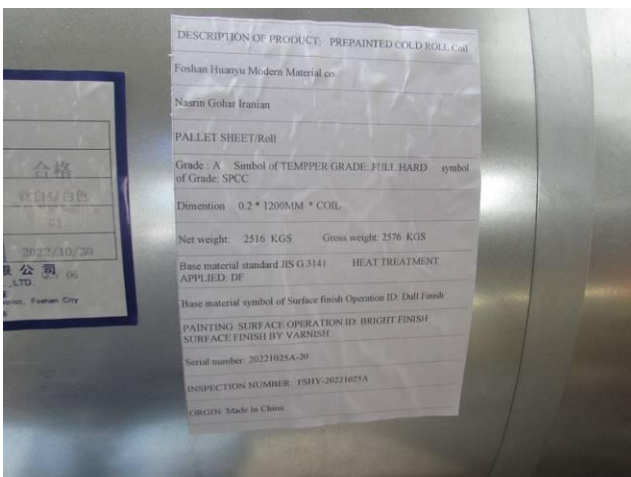
Web: www.winqc.cn



Wooden support



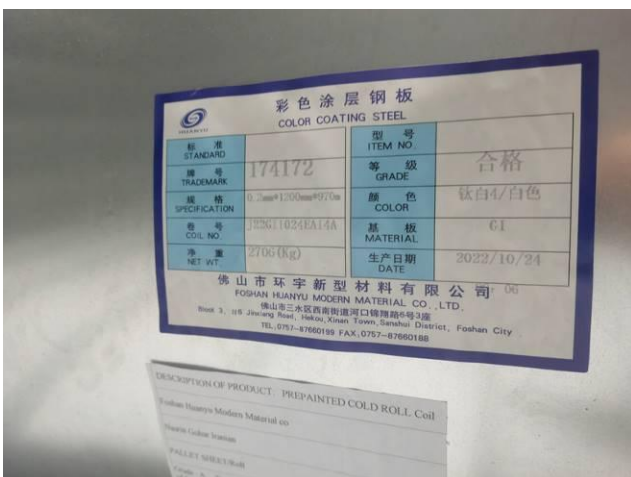
Cargo mark



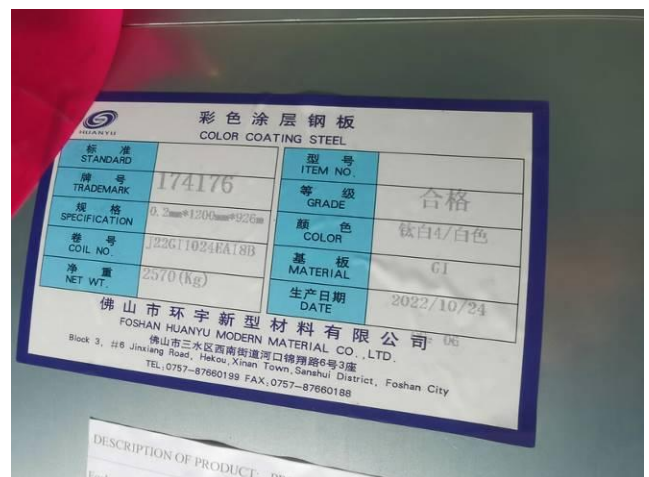
Cargo mark



Cargo mark



Cargo mark



Cargo mark

Loading Report

E-mail: Customer_Service@winqc.cn

Web: www.winqc.cn



Cargo mark



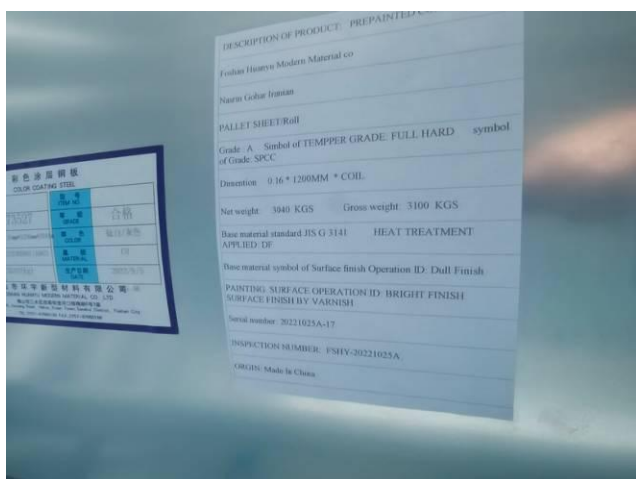
Cargo mark



Cargo mark



Cargo mark



Cargo mark

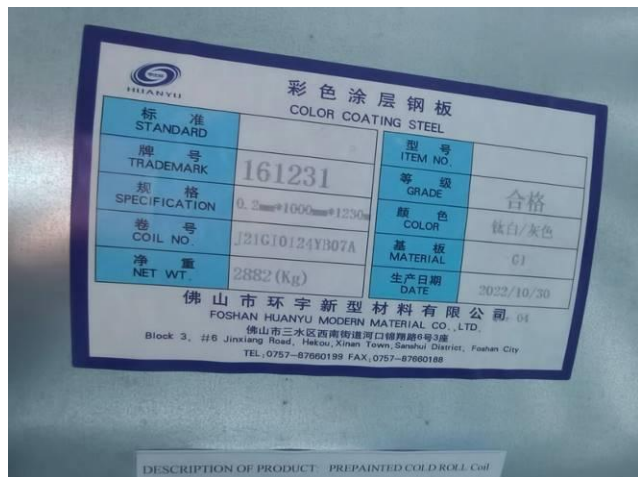


Cargo mark

Loading Report

E-mail: Customer_Service@winqc.cn

Web: www.winqc.cn



Cargo mark



Cargo mark



Sample plate



Sample plate

Pictures of container loading

CICU3111998

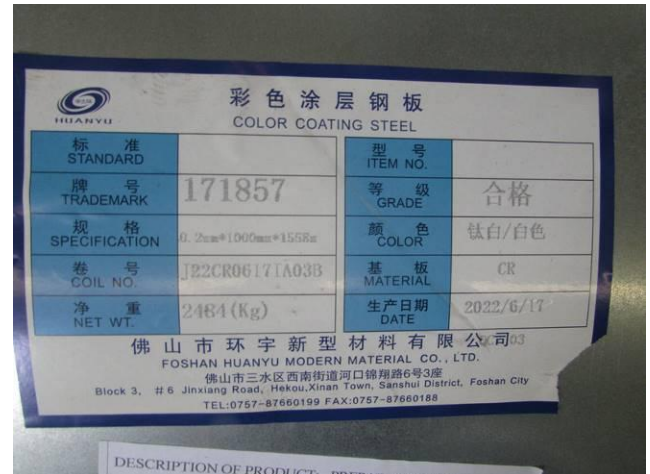
Loading Report

E-mail: Customer_Service@winqc.cn

Web: www.winqc.cn



Product marks



Product marks



Product marks



Product marks



Product marks



Product marks

Loading Report

E-mail: Customer_Service@winqc.cn

Web: www.winqc.cn



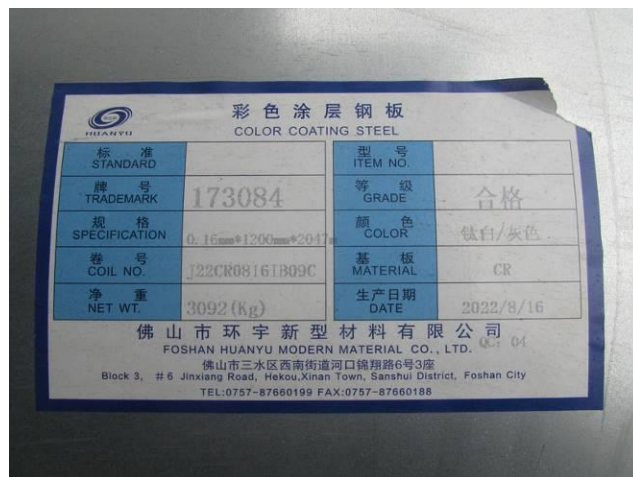
Product marks



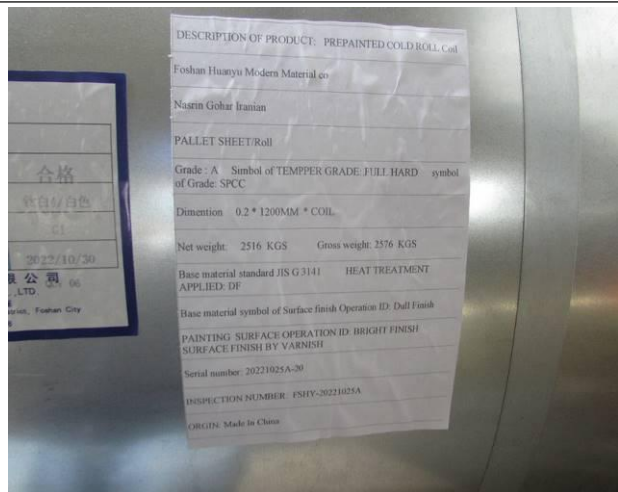
Product marks



Product marks



Product marks



Product marks



Outer view for container

Loading Report

E-mail: Customer_Service@winqc.cn

Web: www.winqc.cn



Outer view for container



Outer view for container



Outer view for container



Outer view for container



Inner view for container



Inner view for container

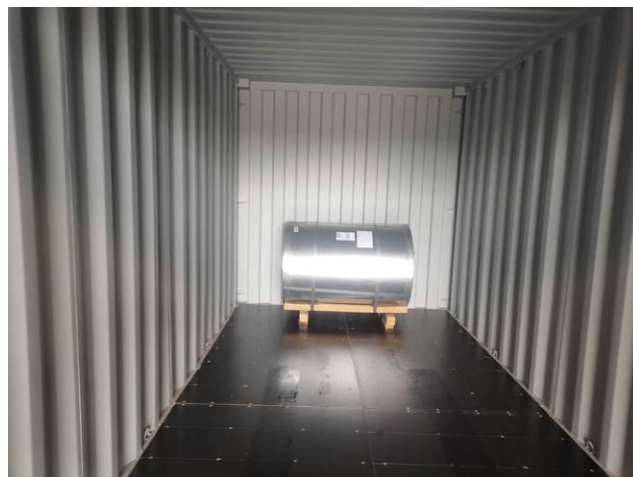
Loading Report

E-mail: Customer_Service@winqc.cn

Web: www.winqc.cn



Inner view for container



Loading-1



Loading-2



Loading-3



Loading-4



Loading-5

Loading Report

E-mail: Customer_Service@winqc.cn

Web: www.winqc.cn



Loading-6



Loading-7



Loading-8



Loading-9



Loading-10- Loading completed



Lashing for front coils.

Loading Report

E-mail: Customer_Service@winqc.cn

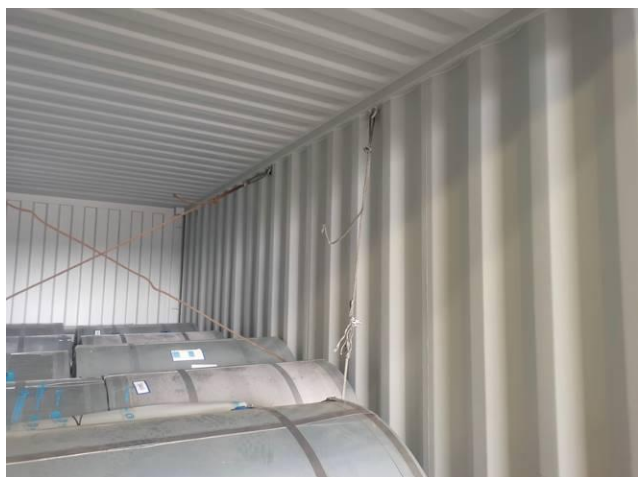
Web: www.winqc.cn



Sample plate



Lashing for front coils.



Lashing for front coils.



Secured with wire ropes and wedge woods in right side.



Secured with wire ropes and wedge woods in right side.



Secured with wire ropes and wedge woods in right side.

Loading Report

E-mail: Customer_Service@winqc.cn

Web: www.winqc.cn



Secured with wire ropes and wedge woods in right side.



Lashing for front coils.



Before closed the door.



SEAL FOR H202414



AFTER CLOSED THE DOOR.



AFTER CLOSED THE DOOR.

Loading Report

E-mail: Customer_Service@winqc.cn

Web: www.winqc.cn

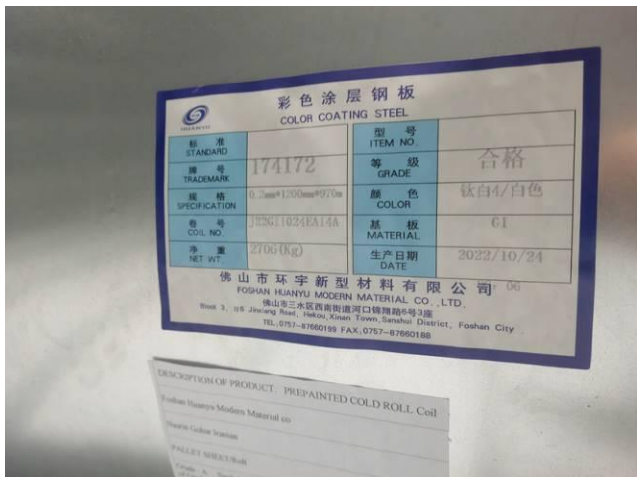


SEAL FOR 600197

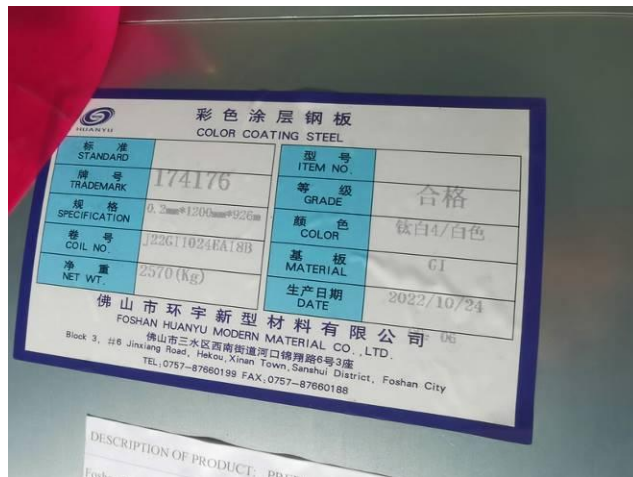


SEAL FOR H202414

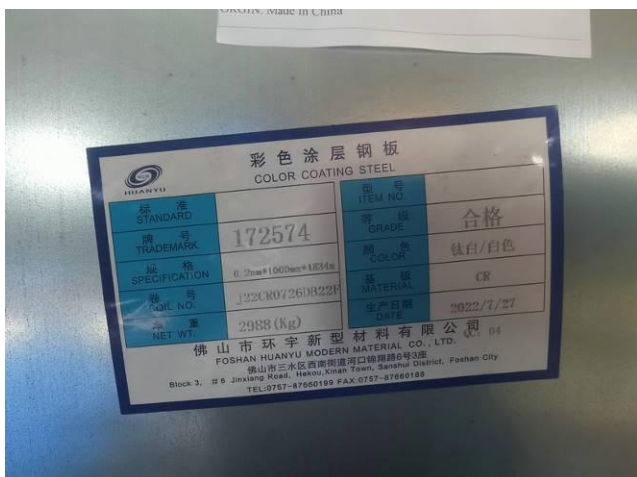
CICU3112145



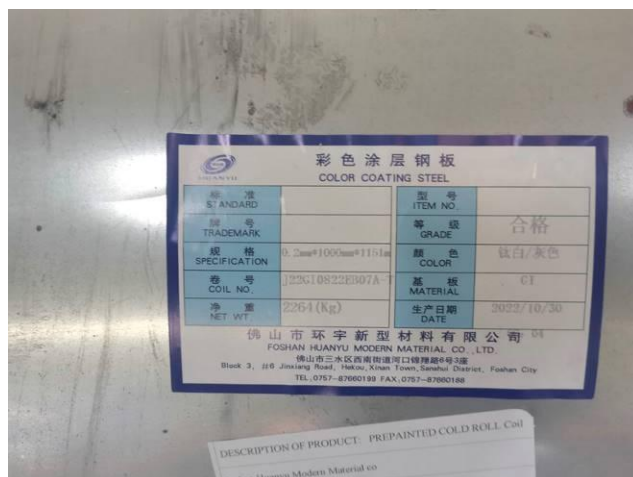
Product marks



Product marks



Product marks



Product marks

Loading Report

E-mail: Customer_Service@winqc.cn

Web: www.winqc.cn



Product marks



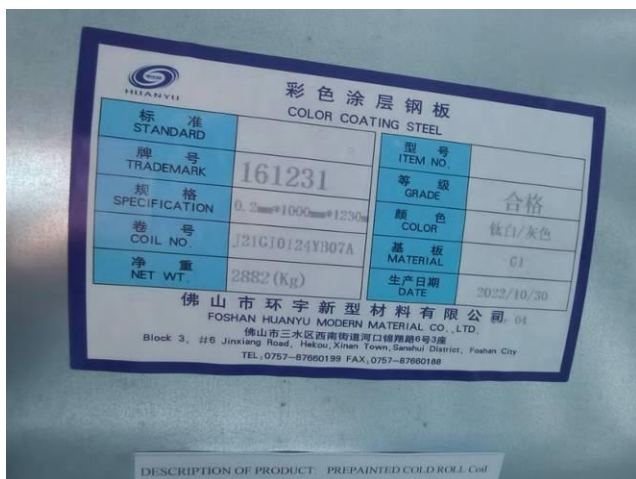
Product marks



Product marks



Product marks



Product marks



Product marks

Loading Report

E-mail: Customer_Service@winqc.cn

Web: www.winqc.cn



Outer view for container



Outer view for container



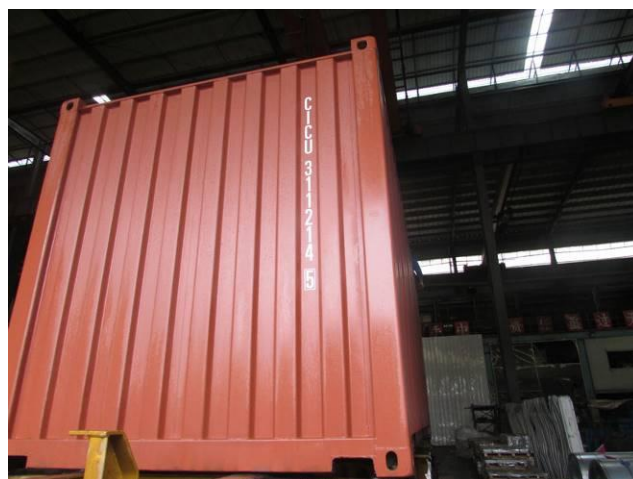
Outer view for container



Outer view for container



Outer view for container



Outer view for container

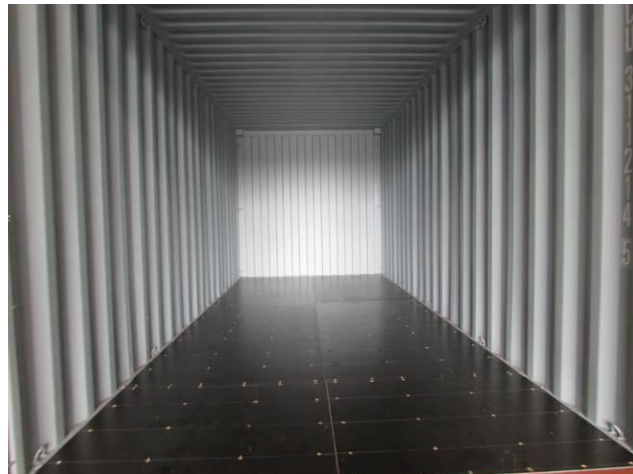
Loading Report

E-mail: Customer_Service@winqc.cn

Web: www.winqc.cn



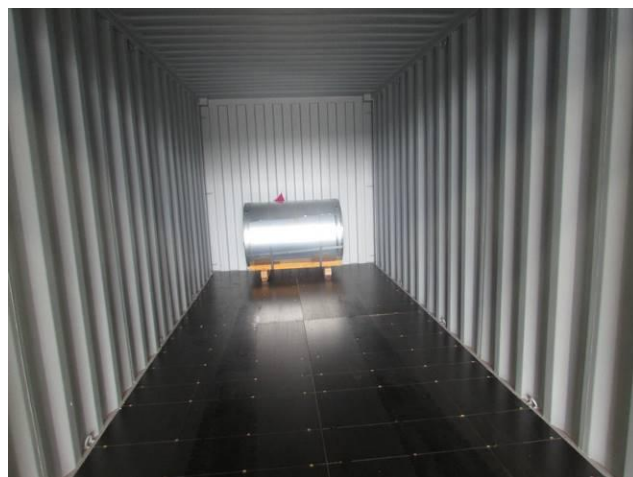
Inner view for container



Inner view for container



Inner view for container



Loading-1



Loading-2



Loading-3

Loading Report

E-mail: Customer_Service@winqc.cn

Web: www.winqc.cn



Loading-4



Loading-5



Loading-6



Loading-7



Loading-8



Loading-9

Loading Report

E-mail: Customer_Service@winqc.cn

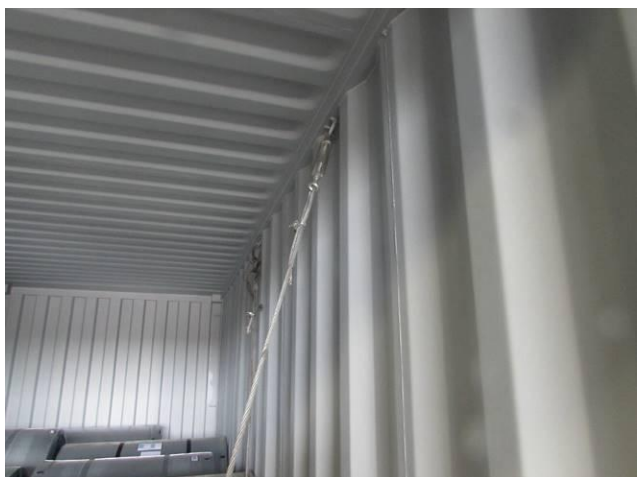
Web: www.winqc.cn



Loading-10- Loading completed



Sample plate



Lashing for front coils.



Secured with wire ropes and wedge woods in right side.



Secured with wire ropes and wedge woods in right side.



Secured with wire ropes and wedge woods in right side.

Loading Report

E-mail: Customer_Service@winqc.cn

Web: www.winqc.cn



Lashing for front coils.



Lashing for front coils.



Lashing for front coils.



Secured with wire ropes and wedge woods in right side.



Before closed the door.



SEAL FOR H202411

Loading Report

E-mail: Customer_Service@winqc.cn

Web: www.winqc.cn



AFTER CLOSED THE DOOR.



AFTER CLOSED THE DOOR.



SEAL FOR H202411



SEAL FOR 600198



Loading Report

E-mail: Customer_Service@winqc.cn

Web: www.winqc.cn

STEEL PLATE MILL CERTIFICATE																		
INVOICE NO.	FSHY-20221101A		Customer	MR HASSAN BANGALEH				Certificate NO.		FSHY2022110100		DATE OF ISSUE	2022-11-1		(SPECIFICATION) GB/T 12754-2006			
卷号	规格	颜色	净重 (KG)	基板硬度 base material hardness		化学成分 Chemical Composition (%) *1000					涂膜厚度 thickness of painting layer		表面粗糙度 surface roughness	光泽	铅笔硬度	耐溶剂性	书写性	擦拭性
PRODUCT NO	SPECIFICATION	COLOR	NET. WT (KG)	first time test result (HRB)	second time test result (HRB)	C	SI	Mn	P	S	TOP	BACK	S. R. RA (um)	GLOSS %	PENCIL HARDNESS	M. E. K.	WRITING	ERASING
1	0.2*1000*C	white Nano	2586	81.6	81.4	40	20	149	18	17	22	7	0.04	100	3H	>100次	OK	OK
2	0.2*1000*C	white Nano	2610	81.8	81.7	39	20	150	18	17	22	7	0.04	100	3H	>100次	OK	OK
3	0.2*1000*C	white Nano	2626	81.5	81.7	40	19	151	18	17	22	7	0.04	100	3H	>100次	OK	OK
4	0.2*1000*C	white Nano	2600	81.4	81.3	40	20	150	18	17	22	7	0.04	100	3H	>100次	OK	OK
5	0.2*1000*C	white Nano	2728	81.8	81.7	40	19	150	18	17	22	7	0.04	100	3H	>100次	OK	OK
6	0.2*1000*C	white Nano	2558	81.5	81.7	40	20	152	18	17	23	7	0.04	100	3H	>100次	OK	OK
7	0.2*1000*C	white Nano	2484	81.8	81.6	40	20	150	18	17	22	7	0.04	100	3H	>100次	OK	OK
8	0.2*1000*C	white Nano	2988	81.5	81.7	39	20	150	18	17	22	7	0.04	100	3H	>100次	OK	OK
9	0.2*1000*C	white Nano	2644	81.8	81.7	40	21	151	18	17	21	7	0.04	100	3H	>100次	OK	OK
10	0.2*1000*C	white Nano	2882	81.8	81.7	38	20	150	18	18	22	7	0.04	100	3H	>100次	OK	OK
11	0.2*1000*C	white Nano	2672	81.5	81.4	40	20	150	18	17	22	7	0.04	100	3H	>100次	OK	OK
12	0.2*1000*C	white Nano	2332	81.8	81.7	41	19	150	18	17	22	7	0.04	100	3H	>100次	OK	OK

13	0.2*1000*C	white Nano	2264	81.8	81.7	40	20	150	18	17	22	7	0.04	100	3H	>100次	OK	OK
14	0.16*1200*C	white Nano	3092	81.8	81.7	40	20	150	18	18	20	7	0.04	100	3H	>100次	OK	OK
15	0.16*1200*C	white Nano	3016	81.8	81.7	40	20	150	18	17	22	7	0.04	100	3H	>100次	OK	OK
16	0.16*1200*C	white Nano	3090	81.8	81.7	40	21	150	18	17	22	7	0.04	100	3H	>100次	OK	OK
17	0.16*1200*C	white Nano	3040	81.8	81.6	40	20	150	18	17	22	7	0.04	100	3H	>100次	OK	OK
18	0.2*1200*C	white Nano	2570	81.6	81.7	40	19	151	18	17	22	7	0.04	100	3H	>100次	OK	OK
19	0.2*1200*C	white Nano	2706	81.5	81.7	39	20	150	18	17	21	7	0.04	100	3H	>100次	OK	OK
20	0.2*1200*C	white Nano	2516	81.8	81.4	40	20	150	18	17	22	7	0.04	100	3H	>100次	OK	OK
合计			54004															

WE HEREBY CERTIFY THAT THE HARMFUL MATERIALS OF THE PAINT USED IN THIS STEEL IN ACCORDANCE WITH THE SPECIFICATION GB18581-2001, NO RADIOACTIVITY AND NO HARM TO HEALTH

WE HEREBY CERTIFY THAT THE HARMFUL MATERIALS OF THE PAINT USED IN THIS STEEL IN ACCORDANCE WITH THE SPECIFICATION GB18581-2001, NO RADIOACTIVITY AND NO HARM TO HEALTH

质检部长 (CHIEF OF INSPECTION)

检验员 (INSPECTOR)

陈成业

罗智

-----END OF REPORT-----



Loading Report

E-mail: Customer_Service@winqc.cn

Web: www.winqc.cn
